

# Using **USB** modems as Network modems (**Ethernet/LAN**)

## Brief instructions for an interface solution

© 2018 **SCS** Spezielle Communications Systeme GmbH & Co. KG



## 1. General

In some applications it is advantageous to be able to operate USB modems (e.g. DR-7400, PTC-III, DSPTNC, etc.) on the LAN (or WLAN). Especially the control of the modems over very high distances can be realized easily via LAN.

USB <-> LAN adapters are a universal and relatively simple solution for this application. SCS has extensively tested the DS-510 adaptor from Silex Technology Inc. and can recommend this adaptor for applications using the SCS modems.

<http://www.silexeurope.com/de/home/produkte/usb-device-server3/ds-510.html>

## 2. Installation and use of the USB<->LAN-Adapter DS-510

The setup and installation of the DS-510 is described in detail on the Silex website. Basically, the software **SX Virtual Link** must first be installed on the local Windows computer on which the actual modem application (e.g. RMS Express) should work. Also, the current SCS USB driver for the modem must be installed on this local machine.

<http://www.silexeurope.com/de/home/support/produktgruppen/common-downloads/device-server-and-virtual-link.html>

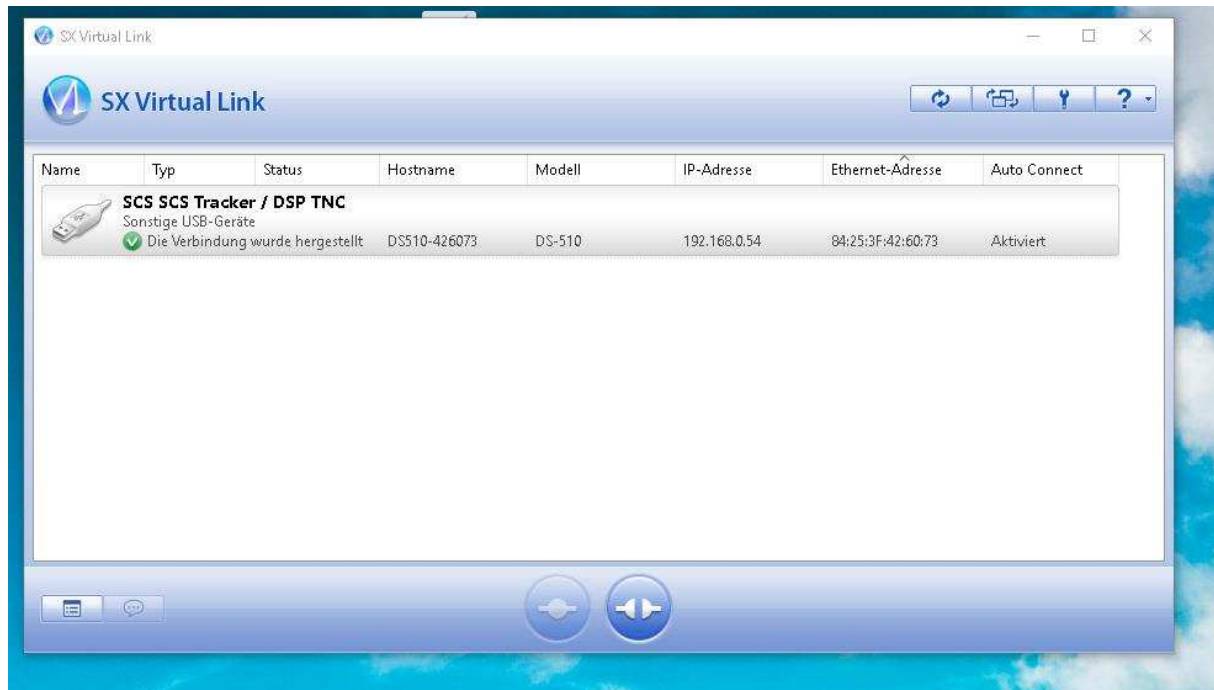
[http://www.p4dragon.com/download/SCS\\_USB\\_Driver\\_2\\_08\\_24\\_setup.exe](http://www.p4dragon.com/download/SCS_USB_Driver_2_08_24_setup.exe)

To use the modem over the network, the modem is connected to one of the two USB inputs of the DS-510 using a USB cable. In addition, the DS-510 is connected to the network on the "remote side" via a patch cable.

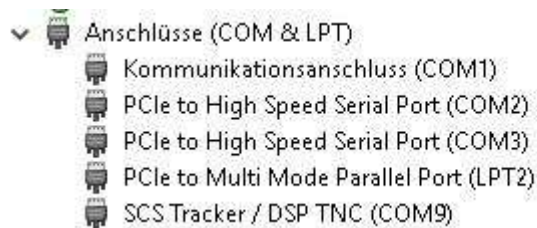
The SX Virtual Link software (on the "local" computer!) establishes a network connection with the DS-510 on the remote side. For this, if necessary, specify the network address of the DS-510 during setup of the software SX Virtual Link.

The DS-510 determines the properties of the device connected via USB and passes this data over the network to SX Virtual Link on the other side of the LAN connection. There, SX Virtual Link creates a virtual USB port, exactly with the same properties as the USB device on the remote side. The virtual USB port then in turn triggers the creation of a virtual COM port. Finally, the remote SCS USB device can be integrated as usual in the application software setup via this virtual COM port.

This procedure allows a high level of compatibility of the USB <-> LAN interface.



The main window of the software **SX Virtual Link** with an active SCS Tracker / DSP TNC



The SCS Tracker appears in the Windows Device Manager as a **virtual COM port**.

**Have fun with operating SCS USB devices over the network!**

# SCS

Spezielle Communications Systeme GmbH & Co. KG

Röntgenstraße 36

63454 Hanau

GERMANY

Internet: [www.p4dragon.com](http://www.p4dragon.com)

E-Mail: [info@p4dragon.com](mailto:info@p4dragon.com)

Tel.: +49(0)618185 00 00

Fax.: +49(0)618199 02 38